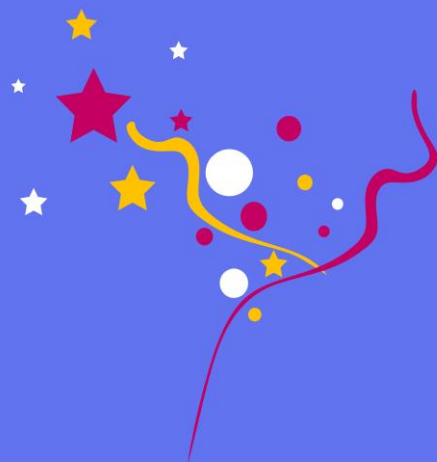




# Girlguiding

Durham North

*girls in the lead*



## Annual Review 2009



# In Girl Guiding..

We provide a unique girl-only space  
We're relevant to today's girls  
We promote diversity and equality  
We give girls a voice

## Volunteers make guiding happen



Thank you and  
congratulations to the  
following people who  
received their Long  
Service Award

Well done to all the new  
leaders who have  
completed the Leadership  
Qualification



50 year Life time Award to  
Mona Legg

40 yr: Elizabeth Gray  
Marilyn Dixon

30ur: Anne Lawson  
Bernie Conlon  
Heather Justice  
Hyacinthe Greener  
Joan Wardrobe  
Rita Blakey  
Susan Simpson  
Val Cram  
Vivien Smith

20 yr: Catherine Chapman  
Dianne Stewart  
Dorothy Quinn  
Glenis Wallace  
Helen Wilson  
Hilary Pawley  
Katy Cresswell  
Paula Sumner  
Vivienne Dickinson

10 yr: Katie Wilkes  
Pat Barker  
Sarah Cockram  
Sonia Colgin

5 yr Claire Quinn  
Daniella McCluskey  
Elizabeth Carr  
Elizabeth Simpson  
Gemma Hartshorne  
Gemma Kearney  
Helen Ford  
Helen Naisbitt  
Judith Bell  
Julie Curry  
Sandra Robinson  
Sheila Wynne

Congratulations to Fiona  
Johnson on gaining the  
Queens Guide Award



## From the County Commissioner

Thanks to our leaders and supporters I am delighted at the opportunities our girls and young women have enjoyed this year.

Girls, leaders and Trefoil Guild members had great fun taking part in the Girlguiding UK Challenge, 'Change the World'. In partnership with 19 charities, everyone had a great time planting trees, learning about asthma, reducing their carbon footprint, raising money for the Grace House Hospice, Supporting the WWF. Save the Children and lots more...

Almost 300 Rainbows and leaders took part in the County Rainbow Fun Day. The theme this year was a Disney Adventure and the girls enjoyed lots of activities, a treasure hunt, crafts, singing and a picnic.

Lots of girls have been on holiday together, to camps, enjoyed sleepovers and more girls than ever before have travelled abroad. Well done to the leaders who have gained their travelling abroad endorsement.

Abigail Green travelled to Montserrat with a group from NEE. There they trained guides to become Peer Educators.



Katy Sutcliffe and Fran Morris travelled to India where they learned about Indian culture, went trekking, rafting and took part in a community Project at a Nunnery in the foothills of the Himalayas



We are delighted to have made so many partnerships during the year. As new owners of Church Woods, these partners and our members have helped make our woodland safe after over 40 years of neglect and thanks to the Woodland Trust we have planted over 700 native trees which will increase the biodiversity in our woodland.

We now have some outdoor play equipment thanks to Tyco Thermal Controls which has proved very popular with the girls.



Sunderland North Division Rangers secured funding for bunk beds in Our Lodge at Camp House and we all look forward to the building being developed so small groups of girls can enjoy a holiday there and have fun outdoors.

Volunteers from Gateshead Division took part in Project SWITCH. The aim was to reach Girls and Young women within BME areas and encourage them to join a SWITCH group which was funded by Girlguiding UK.

Thanks to the Sir John Priestman Trust Laura Richardson and Beth Urwin took part in an Outward Bound course with Rachel Rodgers joining a voyage on a Tall Ship. Two young women attended 'Innovate' the Girlguiding UK Youth Forum.

A big thank you to our leaders, supporters, Advisers, Commissioners and training team who give of their time so freely and enable our girls and young women to have such fun and make new friends - at home and abroad.



We have had a splendid year and are looking forward to our Centenary year beginning with our Launch Party at Bents Park 5th Sept 2009. Have fun

Pat Bennett

.....develop their potential and to make a difference to the world

## COME AND JOIN US.....

Membership is open to all girls and women irrespective of faith, race, culture, nationality or any other circumstances, provided they are able to understand and are willing to make or work towards making the Promise. Girlguiding UK is non political, believes in being fair, open and inclusive, membership is voluntary.

## WHERE TO FIND US:

Rainbow, Brownie, Guide and Senior Section groups meet on different days of the week across the county in Blaydon, Derwentside, South Shields, Gateshead, Jarrow, Sunderland North, Whickham, Sunderland South, Washington and Houghton

## GIRL GUIDING DURHAM NORTH HAS.....

3724 members  
515 trained adult volunteer leaders and unit helper aged 18 - 65 years  
284 Senior Section members aged 14 - 25 years  
845 Guides aged 10 - 15 years  
1768 Brownies aged 7 - 10 years  
543 Rainbows aged 5 - 7 years  
421 Children on waiting to join lists

If you would like to find out more about Guiding or join us as a girl or adult please contact:

### County Office:

Girlguiding Durham North County Office  
Design Works  
Felling  
Gateshead  
Tyne & Wear  
NE10 0JP  
Tel: 0191 4236286  
Email: [office@girlguiding-durhamnorth.org.uk](mailto:office@girlguiding-durhamnorth.org.uk)



## SAFE FROM HARM

Girlguiding UK operates a 'safe from harm' policy to safeguard its members while participating in guiding activities.

All adults helping with meetings or events are requested to abide by this policy.

All those with unsupervised access to members undergo a volunteer registration process.



Thank you for the support throughout the year to.....



**ALLDEC (Northern) Ltd.**

**LandSecurities**

**tyco** / Thermal Controls

**The Sir John Priestman Charity Trust**



**Emmanuel College, Gateshead**

**Windlestone School, Chiltern**